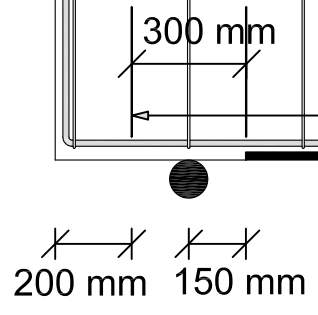
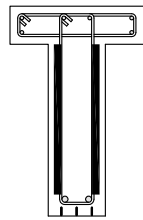


Scale 1:20

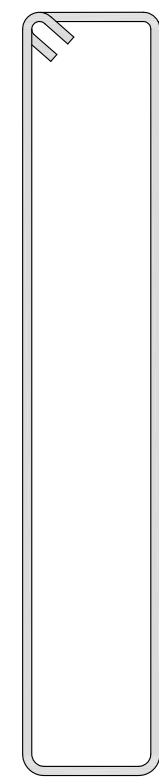


21 transverse laminates

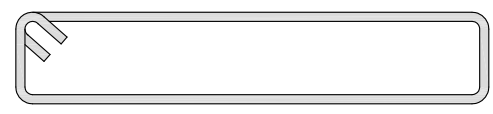
3 longitudinal laminates

diameter of the support rod = 50 mm

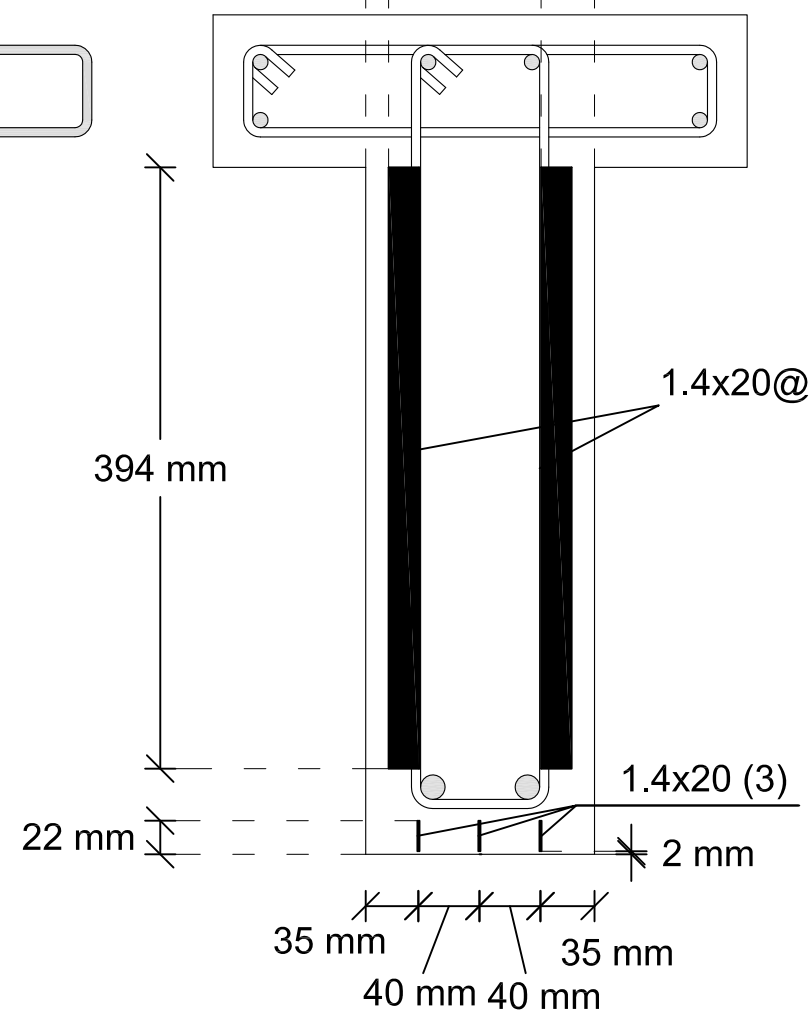
Scale 1:5



+



15 mm 35 mm

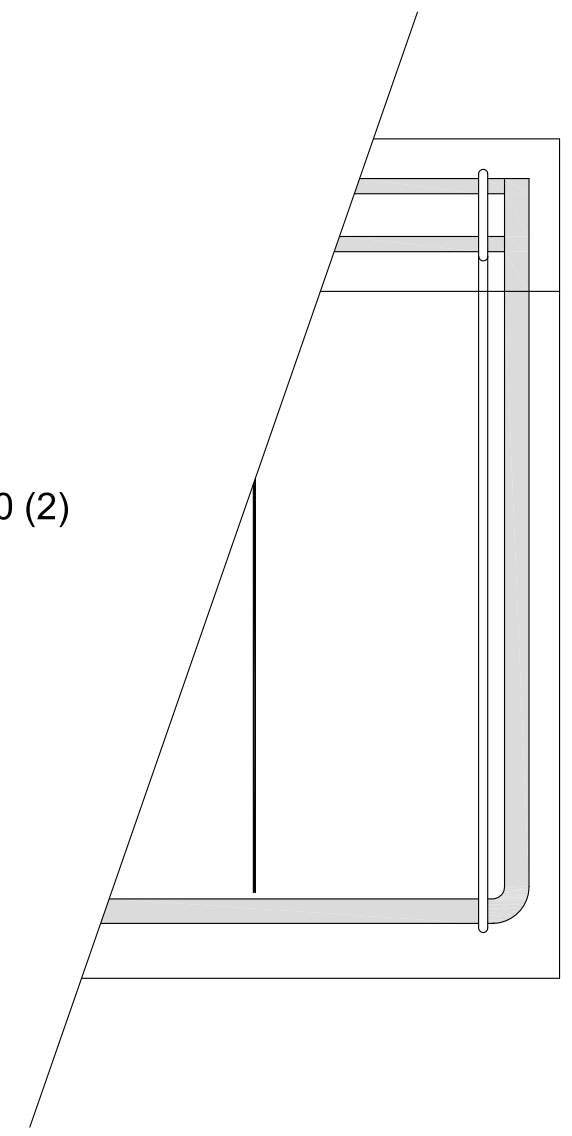


1.4x20@300 (2)

1.4x20 (3)

Stirrup $\phi 6@300$

Cross-section near the supports*



Detailing of the CFRP strengthening

* the insertion depth of the longitudinal CFRP laminates increases from 22 mm near the supports to 27 mm at the mid span due to the residual deflection that remained after the pre-cracking of the T-beam